

Product Code: PT/MVM/001

## PRODUCT DESCRIPTION:

The diagnosis of viral infection relies on the proper specimen collection, transport and storage until further process. Viral Transport Medium (VTM) allows the transfer of specimen which may carry potential viral pathogens for further research, including conventional cell culture methods, diagnostic tests, and molecular biology techniques. Commercially prepared viral transport media are available in a screw cap plastic tube containing buffered solutions antifungal and antibacterial components. Antibiotics and antifungal reagents are incorporated in the viral transport media to suppress the growth of contaminating bacteria and fungi separately.

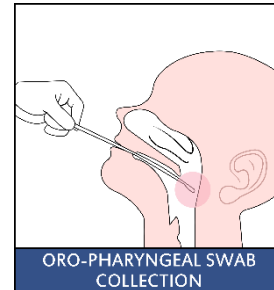
**Note: If the sample are not processed for 24 hrs. please ensure to store at 2-8°C and for long term storage keep at -20°C.**

**Swab Sample collection guidelines** (Adapted from ICMR guidelines for COVID-19)

## STEP TO BE FOLLOWED FOR SPECIMEN COLLECTION:

- Nasal swab and/or throat swab specimens is to be collected as per GOI Guidelines.
- Sample collection area should be kept clean and table or work surface should be properly disinfected with surgical spirit.
- Collect required details from patient and fill the sample collection form.
- Ensure that patient is seated in a comfortable seating position.
- Clearly explain the sample collection procedure to ensure full cooperation from the patient.
- Wear appropriate personal protective equipment (PPE) such as gloves, apron, N95 mask, head cap, goggles before starting the procedure
- Label the specimen collection vial containing Viral Transport Medium (VTM) with the unique sample ID.
- Specimen should be collected under good illumination.

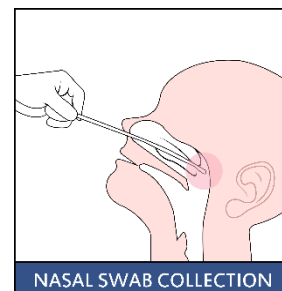
## METHOD OF THROAT/ORO-PHARYNGEAL SWAB COLLECTION:



Gently tilt the patient's head back

- Steady the chin
- Ask the patient to open his/her mouth
- Use a disposable tongue depressor to hold the tongue well
- Insert a sterile swab
- Swab both the tonsils and the posterior pharynx vigorously with a rotating motion, till the patient starts to gag
- Remove the swab without touching the tongue. The swab is then placed in the labeled tube containing VTM Close and tightly screw cap the tube.
- The applicator stick is broken off at the indicated mark (if provided) or at below the level of the tube opening
- Close and tightly screw cap the tube

## NASAL SWAB COLLECTION:



- Take a fresh sterile swab.
- Gently tilt the Patient's head Backwards and steady the chin
- Insert the swab into the nostril parallel (1-2 cm) to the palate until the resistance is met at turbinate
- Hold the swab in that position for few seconds and then withdraw slowly in a firmly rotating motion (5 times clockwise and 5 times anticlockwise).

- Specimens from both nostrils are obtained with the same swab.
- The nasal swab is placed in the same VTM tube containing throat swab. The applicator stick is broken off as done for throat swab and the tube is screw capped tightly.

**PRECAUTION TO BE TAKEN DURING SWAB COLLECTION:**

- Always use personal protective equipment (PPE) e.g., Laboratory apron/gown, face mask, gloves and goggles.
- Wipe gloves thoroughly with a disinfectant (e.g., surgical spirit) before and after taking the sample.
- Ready to use VTM to be used within the expiry date.

**Transportation of samples from field site to testing laboratory**

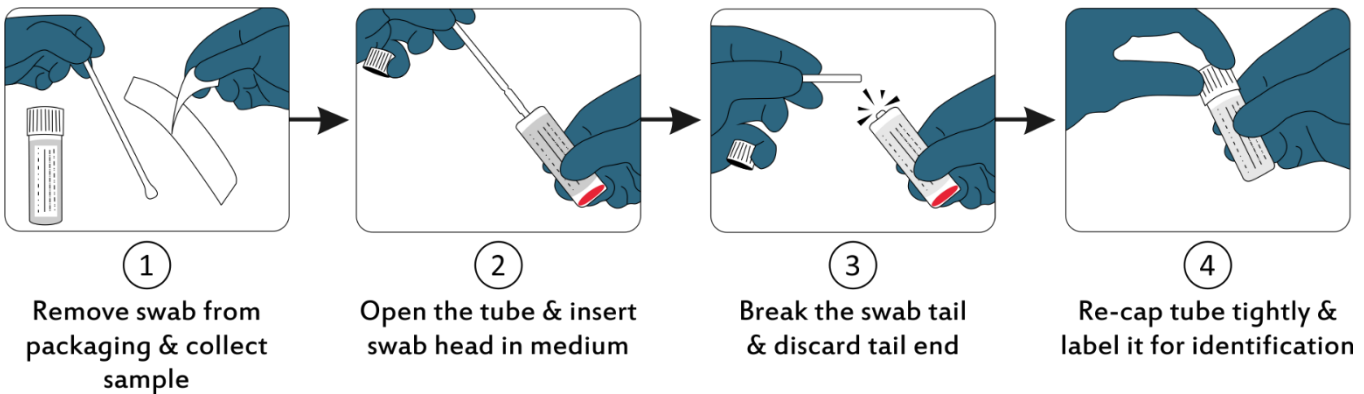
1. Samples should be kept in proper standing position in appropriate test tube rack.
2. The VTM containing tube should be labelled with proper identification details.

**Storage and Shelf Life:**

Viral Transport medium should be stored at 15 to 30°C.

Use before expiry date given on the product label.

Shelf life of the product is 18 months.



Promea Therapeutics Pvt.Ltd., Plot M4,  
 Medical Device Park, Sultanpur,  
 Patancheruvu, Telangana - 502319  
 Customer Care : 8455 240 240  
 Visit : [www.promea.in](http://www.promea.in) | Email : [sales@promea.in](mailto:sales@promea.in)

**Symbols**

- |                          |                |                                   |
|--------------------------|----------------|-----------------------------------|
| REF Catalogue No.        | LOT Batch No.  | Consult instruction for use       |
| Manufacturer             | Expiry date    | Keep away from direct sunlight    |
| Manufacturing date       | Keep dry       | Do not use if box open or damaged |
| Storage temperature      | Sufficient for |                                   |
| IVD In Vitro Diagnostics | Caution        |                                   |