

Product Code : PT/MIM/001

With 2 ml Viral Transport Medium in a 15 mL tube. Recommended for collection and transport of viruses

PRODUCT DESCRIPTION :

Inactivation Transport medium is a specially formulated medium for collection, transport and long- term storage of clinical specimens for molecular analysis.

It is designed for complete inactivation of the pathogen to ensure safety to the handling personnel involved.

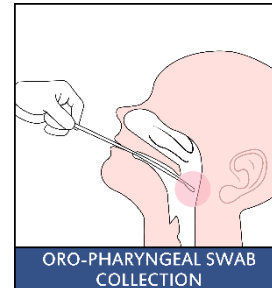
The medium ensures sample storage and transport at ambient temperature (25-30°C)

Swab Sample collection guidelines (Adapted from ICMR guidelines for COVID-19)

STEP TO BE FOLLOWED FOR SPECIMEN COLLECTION :

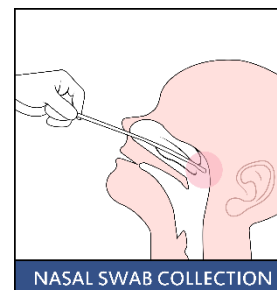
- Nasal swab and/or throat swab specimens is to be collected as per GOI Guidelines.
- Sample collection area should be kept clean and table or work surface should be properly disinfected with surgical spirit.
- Collect required details from the patient and fill the sample collection form.
- Ensure that patient is seated in a comfortable seating position.
- Clearly explain the sample collection procedure to ensure full cooperation from the patient.
- Wear appropriate personal protective equipment (PPE) such as gloves, apron, N95 mask, head cap, goggles before starting the procedure.
- Label the specimen collection vial containing Inactivation Transport Medium (ITM) with the unique sample ID.
- Specimen should be collected under good illumination.

METHOD OF THROAT/ORO-PHARYNGEAL SWAB COLLECTION :



- Gently tilt the patient's head back
- Steady the chin
- Ask the patient to open his/her mouth
- Use a disposable tongue depressor to hold the tongue well
- Insert a sterile swab
- Swab both the tonsils and the posterior pharynx vigorously with a rotating motion, till
 - the patient starts to gag
- Remove the swab without touching the tongue.
- The swab is then placed in the labelled tube containing ITM
- Close and tightly screw cap the tube.
- The applicator stick is broken off at the indicated mark (if provided) or at below the level of the tube opening
- Close and tightly screw cap the tube

NASAL SWAB COLLECTION :



Take a fresh sterile swab

- ❖ Gently tilt the patient's head Backwards and steady the chin

- ❖ Insert the swab into the nostril parallel (1-2 cm) to the palate until the resistance is met at turbinate
- ❖ Hold the swab in that position for few seconds and then withdraw slowly in a firmly rotating motion (5 times clockwise and 5 times anticlockwise).
- ❖ Specimens from both nostrils are obtained with the same swab.
- ❖ The nasal swab is placed in the same ITM tube containing throat swab. The applicator stick is broken off as done for throat swab and the tube is screw capped tightly.

PRECAUTION TO BE TAKEN DURING SWAB COLLECTION :

- ❖ Always use personal protective equipment (PPE) e.g. Laboratory apron/gown, face mask, gloves and goggles.
- ❖ Wipe gloves thoroughly with a disinfectant (e.g., surgical spirit) before and after taking the sample.
- ❖ Ready to use ITM to be used within the expiry date.

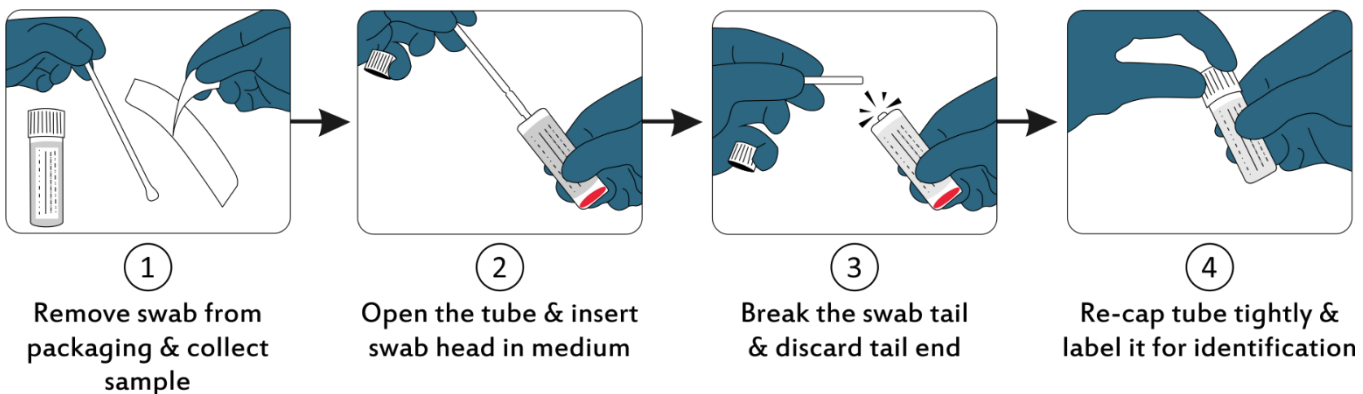
TRANSPORTATION OF SAMPLES FROM FIELD SITE TO TESTING LABORATORY :

- ❖ Samples should be transported at room temperature.
- ❖ Samples should be kept in proper standing position in appropriate test tube rack.
- ❖ The ITM containing tube should be labelled with proper identification details.

STORAGE AND SHELF LIFE :

Inactivation Transport medium should be stored at 25- 30°C.

Use before expiry date given on the product label. Shelf life of the product is 12 months



Symbols